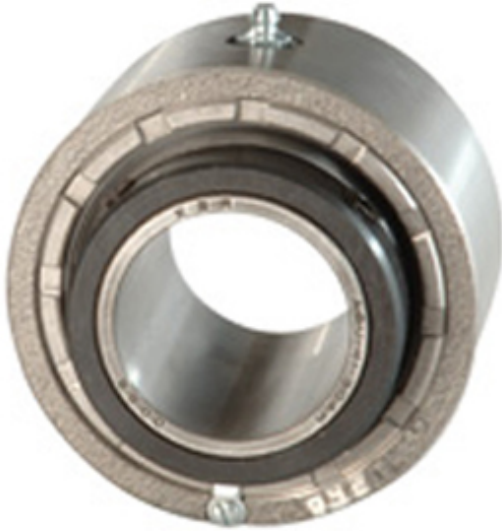




BEARING BOWER CORP.



LINK BELT CB22435E7 Cartridge Unit Bearings

Bearing No. CB22435E7

CB22435E7 Bearing 2D drawings and 3D CAD models

Category	Cartridge Unit Bearings
Inventory	0.0
Manufacturer Name	REXNORD
Minimum Buy Quantity	N/A
Weight	3.865
EAN	0793699762280
Product Group	M06288
Mounting Method	Concentric Collar
Housing Style	Cartridge Unit
Housing Material	Cast Iron
Rolling Element	Spherical Roller Bearing
Expansion / Non-expansion	Non-expansion
Relubricatable	Yes
Insert Part Number	B22435E7L
Seals	Triple Lip Contact
Other Features	Double Row Extended Inner Race Separable Outer Race Spring Locking Single Set Screw
Long Description	2-3/16" Bore; 4-17/32" Outside Diameter; 2-9/16" Cartridge Housing Width; Concentric Collar; Cartridge Unit Housing; Cast Iron; Spherical Roller Bearing; 3-5/16" Length Thru Bore;
Inch - Metric	Inch



BEARING BOWER CORP.

Category	Mounted Cartridge Units
UNSPSC	31171535
Harmonized Tariff Code	8483.20.40.80
Noun	Bearing
Keyword String	Cartridge
Manufacturer URL	http://www.rexnord.com
Manufacturer Internal Number	0176228
Weight / LBS	8
d	2.188 Inch 55.575 Millimeter
Cartridge Housing Width	2.563 Inch 65.1 Millimeter
D	4.531 Inch 115.087 Millimeter
D	3.313 Inch 84.15 Millimeter